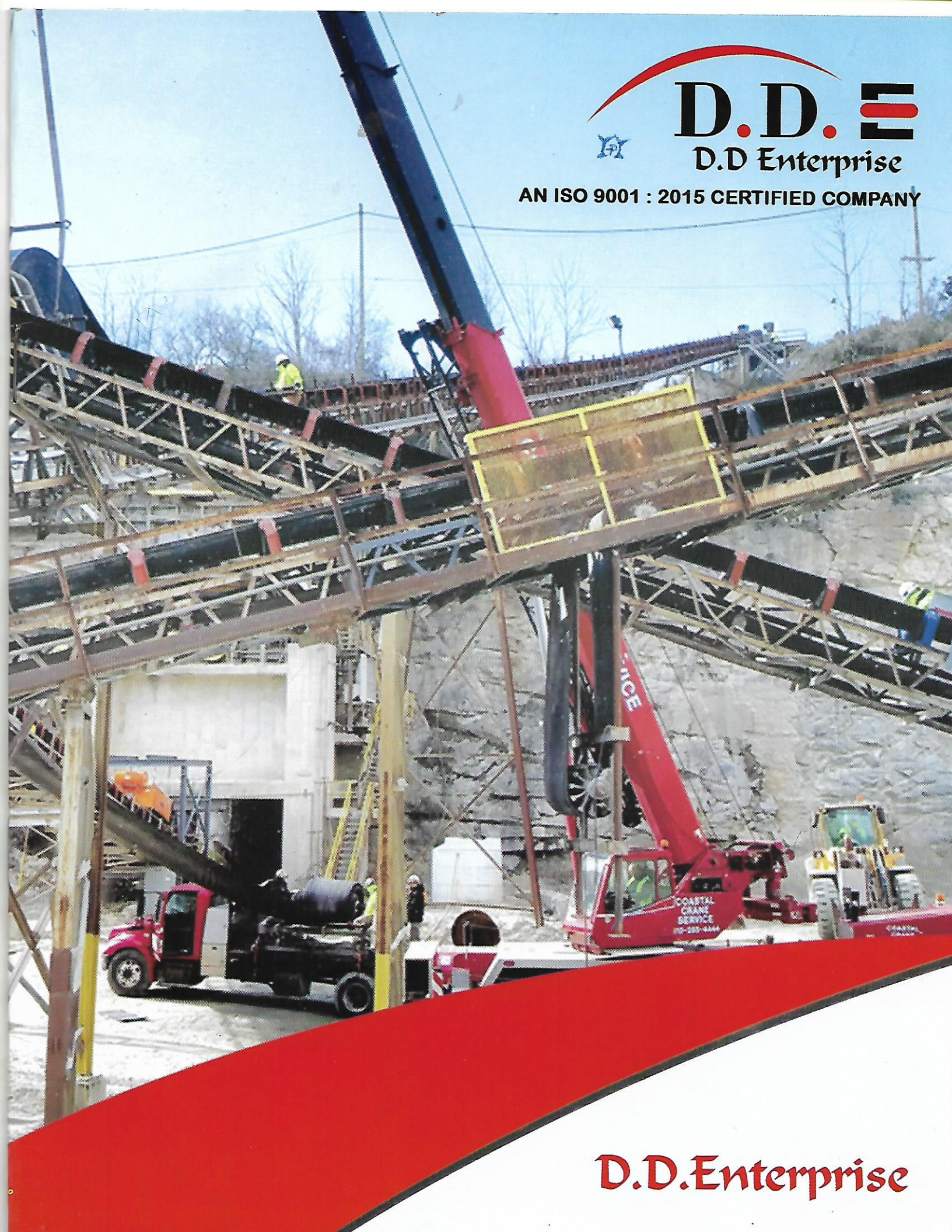




AN ISO 9001 : 2015 CERTIFIED COMPANY



D.D. Enterprise

D D Idlers :

D.D. ENTERPRISE has been manufacturing conveyor idlers for all sectors of industry throughout eastern India. Based on the experience gained, the Company offers a complete range of conveyor idler sets designed to meet all requirements with reduced initial costs and economic operation. D.D. ENTERPRISE Manufacture a comprehensive range of idlers for every application for a wide range of belt conveyors. Coal, coke, lignite, iron ore, cement, fertilizer, slag are almost the many materials.

Sealed for life:

Equipped with deep groove ball bearing covering 20mm to 45 mm diameter . The idlers are life lubricated. Regreasing arrangement of Individual rollers can be provided on request.



Sealing:

Idlers are provided with specially designed, laboratory-tested, multi-labyrinth, non-contacting type seals which keep dust, moisture and dirt away from the bearing. A waterproof weather cap at the roller end prevents water entering alongside the draft. A specially designed back-seal prevents grease from entering the roller.

Tube:

Special ERW tubes as per IS-9295 with close tolerance are used. Idlers with seamless steel tubes can also be supplied if required. Tubes are recessed at both ends simultaneously by special purpose machine to guarantee concentricity.

Bearing Housing

These are made from deep drawing quality steel. Housing are welded to both ends of the tube simultaneously by an automatic welding machine forming a one-block design to ensure rigidity lower rotating weight and minimum out of roundness.

Standards

The Idlers are designed as per IS-8598/ISO-1537/IPSS-2/03-004-85 which are effectively handled by appropriately sized idlers. Idlers are available to belt widths up to 2000mm. They can however, be designed for higher belt width. D.D. ENTERPRISE idlers cover carrying, Return, Self Aligning Carryong and return, impact, V-type return, garland type carrying and return functions. Sealed for life idlers with deep groove ball bearings are available in the D.D. ENETRPRISE range.

Shaft

The idlers are provided with shaft made from bright bar conforming to IS-9550. Shaft conforming to EN-8 or C-40, Chemical composition can be supplied if required. The shafts are ground to provide finish of a very high degree.

Frame

Assembly of idler rollers, life-sealed type, is supported on fabricated brackets on an inverted angle base road forming a truss-like construction which provides extra rigidity. The idlers are also supported on fabricated brackets and are mounted on channel based board.

Lubricants

All idler roller are lubricated with Hi-lithium based grease during assembly. No subsequent lubrication is required as grease quantity is more than adequate.



Testing Facilities :

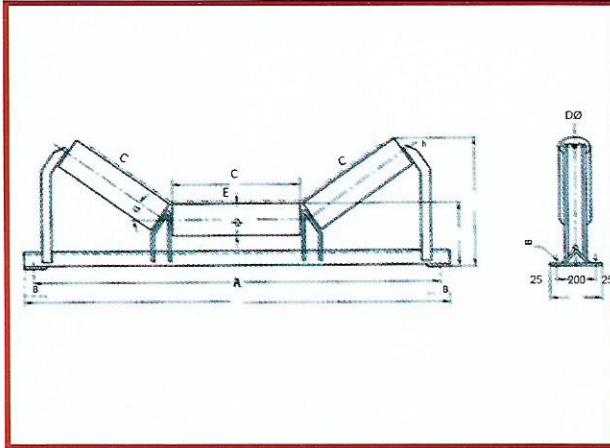
All Components are tested at various stages of manufacture. Idler rollers are fully tested for free running, dust and water penetration, dynamic friction factor and high speed at D.D. Enterprise works equipped with up to date testing facilities.

Roller for existing Installation:

D.D. ENETRPRISE can supply rollers to suit existing installations maintaining AT standard internal construction. The roll dia, roll length, shaft ends are tailor made as per customer's requirement.

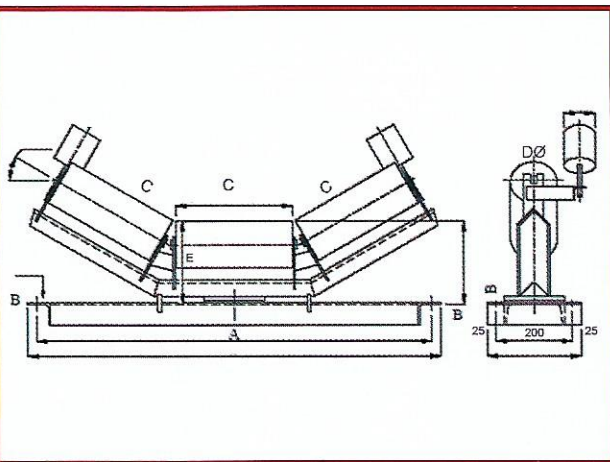
LIFE SEALED IDLERS WITH BALL BEARING TROUGHING IDLER

(ROLL DIA) D Ø MM										α	
101.6 114.3 127 139.7 152.4 159 168.3										10° / 20° / 25° / 30° / 35° / 45°	
BELT SIZE MM	A MM	B MM	C MM	E MM D Ø (ROLL DIA)							F Ø MM
400	690	32.5	160	101.6	114.3	127	139.7	152.4	159	168.3	M12
500	790	32.5	200	200	225	225	275	275	275	290	M12
650	940	30	250	200	225	225	275	275	275	290	M12
800	1090	30	315	200	225	225	275	275	275	290	M12
1000	1290	30	380	200	225	225	275	275	275	290	M12
1200	1490	35	465	215	240	240	275	275	275	290	M16
1400	1690	30	530	215	240	240	275	275	275	290	M16
1600	1900	25	600	-	240	240	275	275	275	290	M16
1800	2100	25	670	-	-	-	275	275	275	290	M20
2000	2300	25	750	-	-	-	-	275	275	290	M20



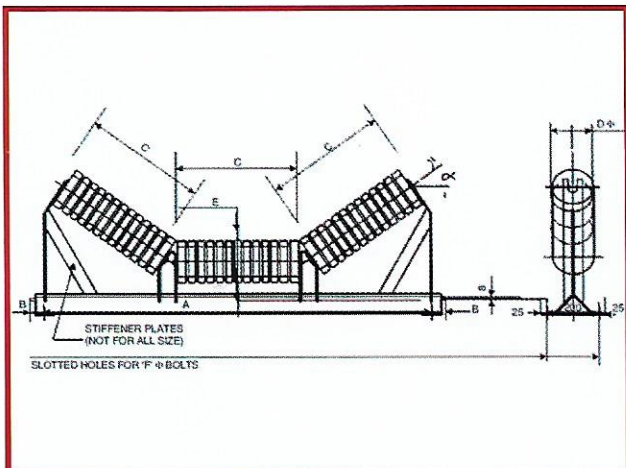
TROUGHING TRAINING IDLER

(ROLL DIA) D Ø MM										α	
101.6 114.3 127 139.7 152.4 159 168.3										10° / 20° / 25° / 30° / 35° / 45°	
BELT SIZE MM	A MM	B MM	C MM	E MM D Ø (ROLL DIA)							F Ø MM
400	690	32.5	160	101.6	114.3	127	139.7	152.4	159	168.3	M12
500	790	32.5	200	200	225	225	275	275	275	290	M12
650	940	30	250	200	225	225	275	275	275	290	M12
800	1090	30	315	200	225	225	275	275	275	290	M12
1000	1290	30	380	200	225	225	275	275	275	290	M12
1200	1490	35	465	215	240	240	275	275	275	290	M16
1400	1690	30	530	215	240	240	275	275	275	290	M16
1600	1900	25	600	-	240	240	275	275	275	290	M16
1800	2100	25	670	-	-	-	275	275	275	290	M20
2000	2300	25	750	-	-	-	-	275	275	290	M20

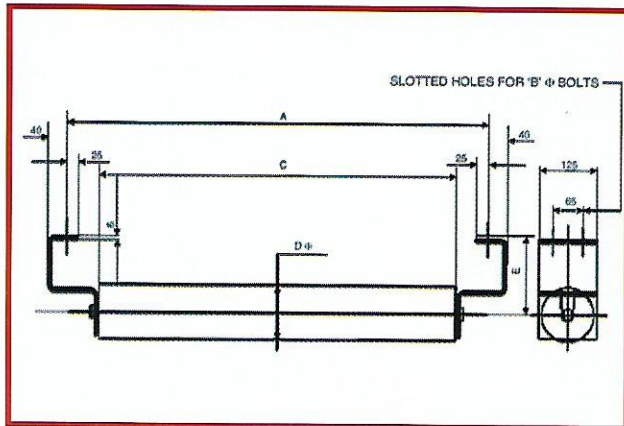


IMPACT IDLER

(ROLL DIA) D Ø MM							α	
152 166 190							20° / 25° / 30° / 35° / 45°	
BELT SIZE MM	A MM	B MM	C MM	E MM D Ø (ROLL DIA)			F Ø MM	
400	690	32.5	160	152	166	190	M12	
500	790	32.5	200	152	166	190	M12	
650	940	30	250	152	166	190	M12	
800	1090	30	315	152	166	190	M12	
1000	1290	30	380	152	166	190	M12	
1200	1490	35	465	152	166	190	M16	
1400	1690	30	530	152	166	190	M16	
1600	1900	25	600	152	166	190	M16	
1800	2100	25	670	152	166	190	M20	
2000	2300	25	750	152	166	190	M20	

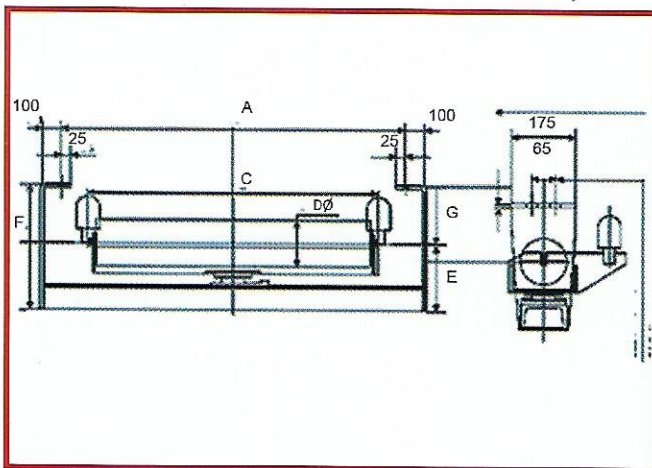


RETURN IDLER



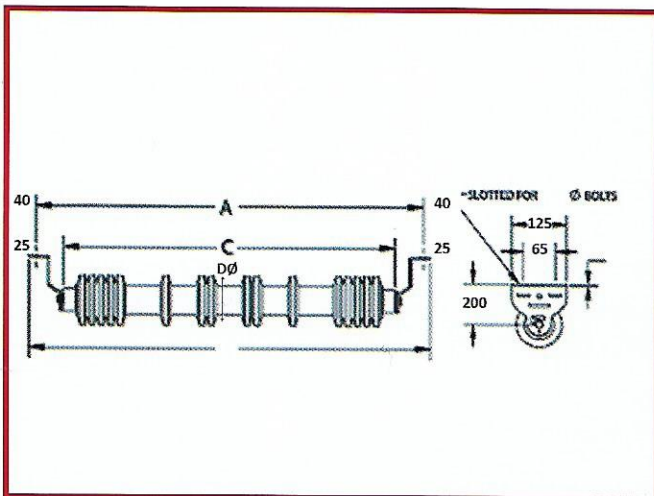
(ROLL DIA) D Ø MM							
	101.6	114.3	127	139.9	152.4	159	168.3
E	160	160	160	160	200	200	200
BELT SIZE MM	A MM	B Ø MM		B Ø MM			
400	690	M12		500			
500	790	M12		600			
650	940	M12		750			
800	1090	M12		950			
1000	1290	M12		1150			
1200	1490	M16		1400			
1400	1690	M16		1600			
1600	1900	M16		1800			
1800	2100	M20		2000			
2000	2300	M20		2200			

RETURN TRAINING IDLER



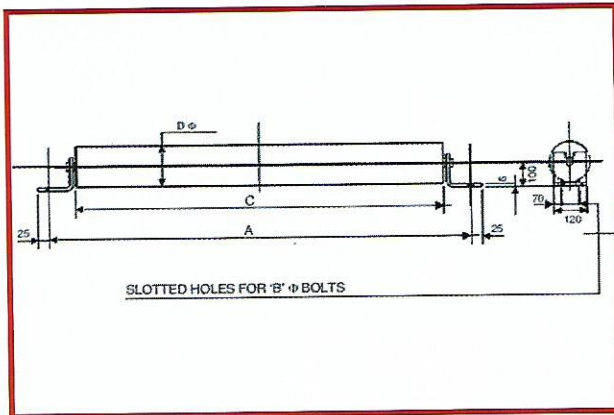
(ROLL DIA) D Ø MM							
	101.6	114.3	127	139.9	152.4	159	168.3
E	184	184	184	184	184	210	210
F	344	344	344	344	344	410	410
G	160	160	160	160	160	200	200
BELT SIZE MM	A MM	B Ø MM		C Ø MM			
400	690	M12		500			
500	790	M12		600			
650	940	M12		750			
800	1090	M12		950			
1000	1290	M12		1150			
1200	1490	M16		1400			
1400	1690	M16		1600			
1600	1900	M16		1800			
1800	2100	M20		2000			
2000	2300	M20		2200			

RUBBER DISC RETURN IDLER

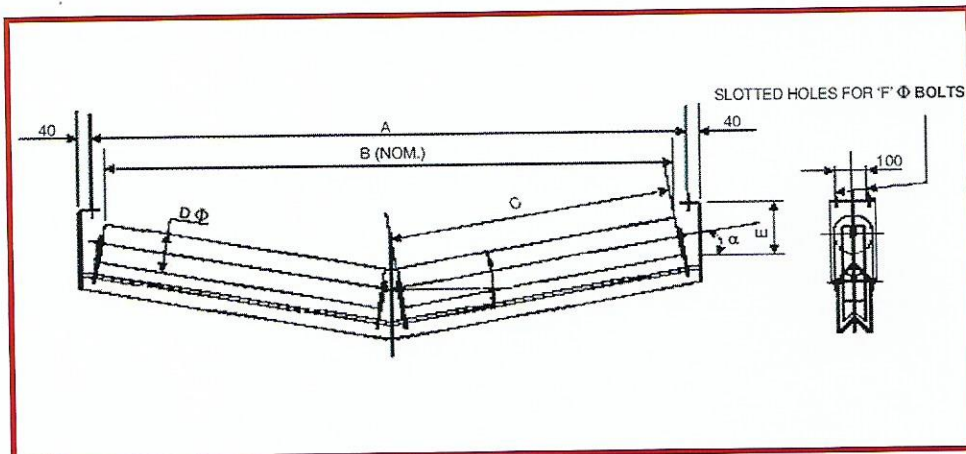
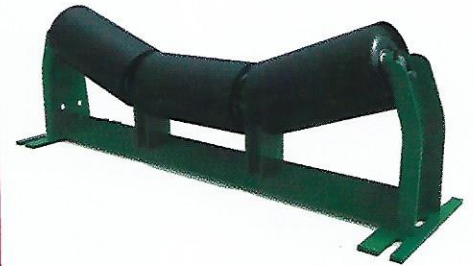


(ROLL DIA) D Ø MM			
	152	180	
BELT SIZE MM	A MM	B Ø MM	C Ø MM
400	690	M12	500
500	790	M12	600
650	940	M12	750
800	1090	M12	950
1000	1290	M12	1150
1200	1490	M16	1400
1400	1690	M16	1600
1600	1900	M16	1800
1800	2100	M20	2000
2000	2300	M20	2200

FLAT CARRYING IDLER



(ROLL DIA) D Ø MM						
101.6	114.3	127	139.9	152.4	159	168.3
BELT WIDTH MM	A MM	B Ø MM	B Ø MM			
400	690	M12	500			
500	790	M12	600			
650	940	M12	750			
800	1090	M12	950			
1000	1290	M12	1150			
1200	1490	M16	1400			
1400	1690	M16	1600			
1600	1900	M16	1800			
1800	2100	M20	2000			
2000	2300	M20	2200			



2 ROLL VEE RETURN IDLER BASE MOUNTED

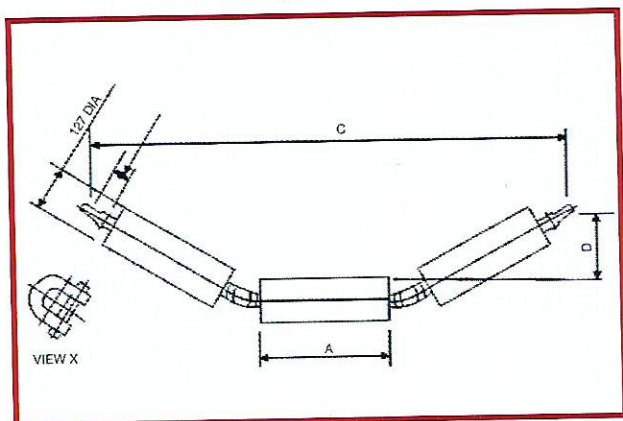
(ROLL DIA) D Ø MM							α 10° / 15°
101.6	114.3	127	139.7	152.4	159	168.3	
BELT WIDTH MM	A MM	B 10° MM		C MM	E 10° MM		F Ø MM
800	1090	956	936	465	134	175	M12
1000	1290	1220	1198	600	158	210	M12
1200	1490	1418	1390	700	175	236	M16
1400	1690	1614	1584	800	192	262	M16
1600	1900	1812	1776	900	210	288	M16
1800	2100	2008	1970	1000	227	314	M20
2000	2300	2206	2164	1100	245	340	M20

DIFFERENT SERIES OF IDLERS

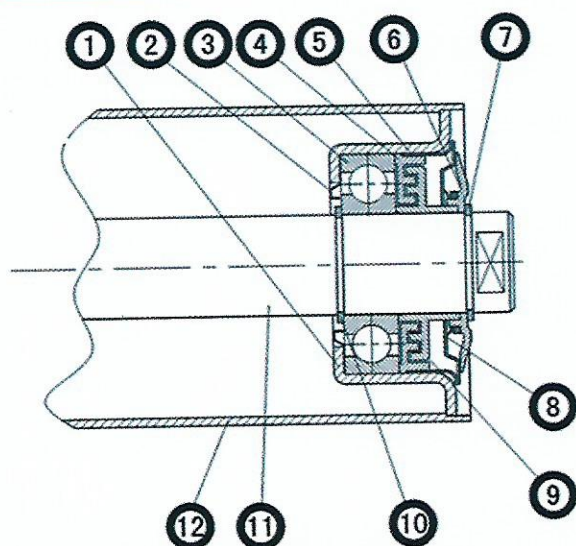
Sealed for Life

SERIES	SINGLE ROW DEEP GROOVE BALL BEARING	RANGE OF BELT SIZE MM	ROLL O/D MM
2000	6204	400 TO 1400	101.6, 114.3, 127, 139.7, 152.4
2500	6205	400 TO 1400	101.6, 114.3, 127, 139.7, 152.4
3000A	6206	400 TO 1600	139.7, 152.4, 159, 168.3
3000B	6206	400 TO 1600	139.7, 152.4, 159, 168.3
3500	6207	800 TO 2000	152.4, 159, 127, 168.3
4000	6208	1200 TO 2000	152.4, 159, 127, 168.3
4500	6209	1200 TO 2000	152.4, 159, 127, 168.3

3 ROLL GARLAND TROUGHING IDLER



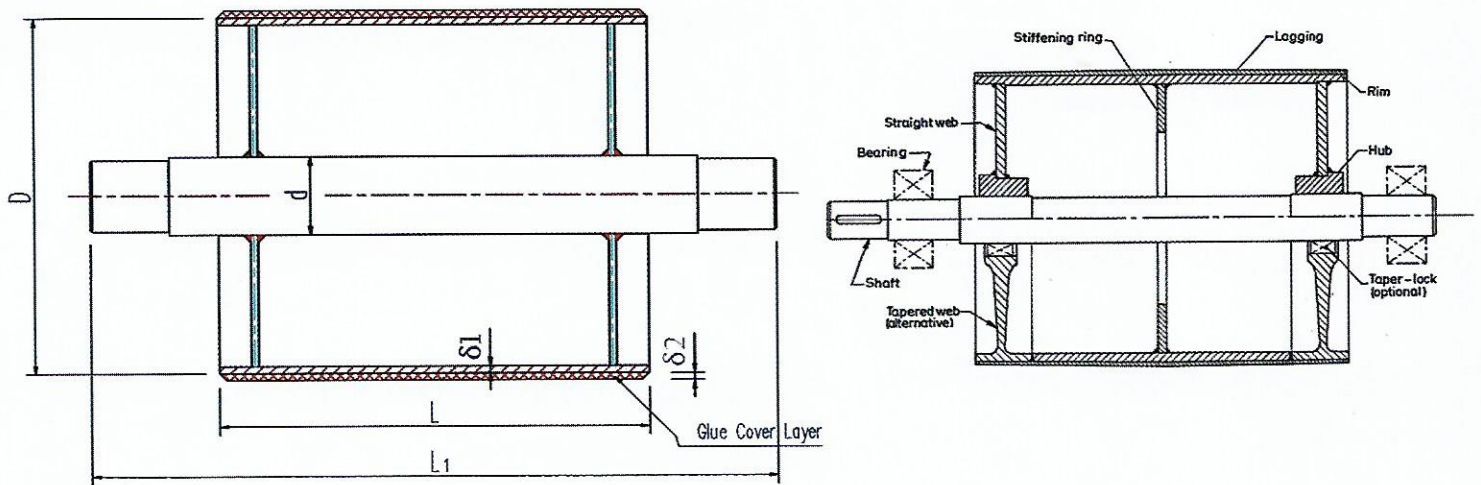
BELT WIDTH MM	A MM	C			D		
		20°MM	30°MM	35°MM	20°MM	30°MM	35°MM
800	296	1047	992	957	66	125	153
1000	360	1231	1167	1126	88	157	190
1200	438	1455	1380	1331	114	196	235
1400	496	1622	1538	1484	134	225	268
1600	563	1815	1721	1661	157	259	307
1800	627	2000	1896	1830	179	291	343



1. Bearing Housing
2. Back Seal
3. Bearing
4. Inner Labyrinth
5. Outer Labyrinth
6. Dust Seal
7. Circlip
8. Weather Seal
9. Seal for Outer Shaft
10. Circlip for Inner Shaft
11. Shaft
12. Tube

Basic Belt Conveyor Components





BELT WIDTH B.W. MM	STANDARD DIA 'D' MM	FACE MM 'L' MM	SHAFT DIA 'D' MM
400	-217, 271, 321, 353, 400, 500, 630 800, 1000, 1250, 1400 & 1600 MM.	500	-Available from 45 mm to 200 mm.
+450		550	
500		600	
+600		700	
650		750	
+750		850	
800		950	
+900		1050	
1000		1150	
1200		1400	
1400		1600	
+1500		1700	
1600		1800	
1800		2000	
2000		2200	

D.D. ENETRPRISE Standard Conveyor Pulleys are fabricated from steel Shell/plates with welded end plates and bosses keyed/fitted direct/through Taper sleeve on shaft.

Shell thickness before matching from 8 to 20 mm. The distance over bosses can be made to suit any requirement, however, we recommended that this be as wide as possible to keep the dimension between the boss and bearing to minimum to reduce shaft flexing.

The Diameters of pulleys selected for a given application depend on the specification of belt, which in turn depend on the power to transmitted . We suggest to use adequate diameter of Drum based on above factors and as recommended by Belt manufacturers.

Drive/Tail/Take-up pulleys have machined crowned faces to train and reduce wear on Belt. Other pulleys are with straight face.

Plain or grooved rubber lagging can be furnished when additional friction is required between belt and pulley or if the application calls for the same such as handling wet/abrasive materials etc.

All pulleys are concentric and statically balanced and confirm to IS : 8531



M/s D.D ENTERPRISE

Manufacturers of : Conveyor Roller, Idler, Pulleys, MS Brackets etc. & General Order Supplies

Works: ICHAPUR SEALDANGA, HOWRAH - 711104

Office: Dasnagar, CTI Bus Stand, Near CTI Training Institute, Howrah- 711103

Ph.: +91 9836384767, 8910508987

Email: ddenterprise85@gmail.com